

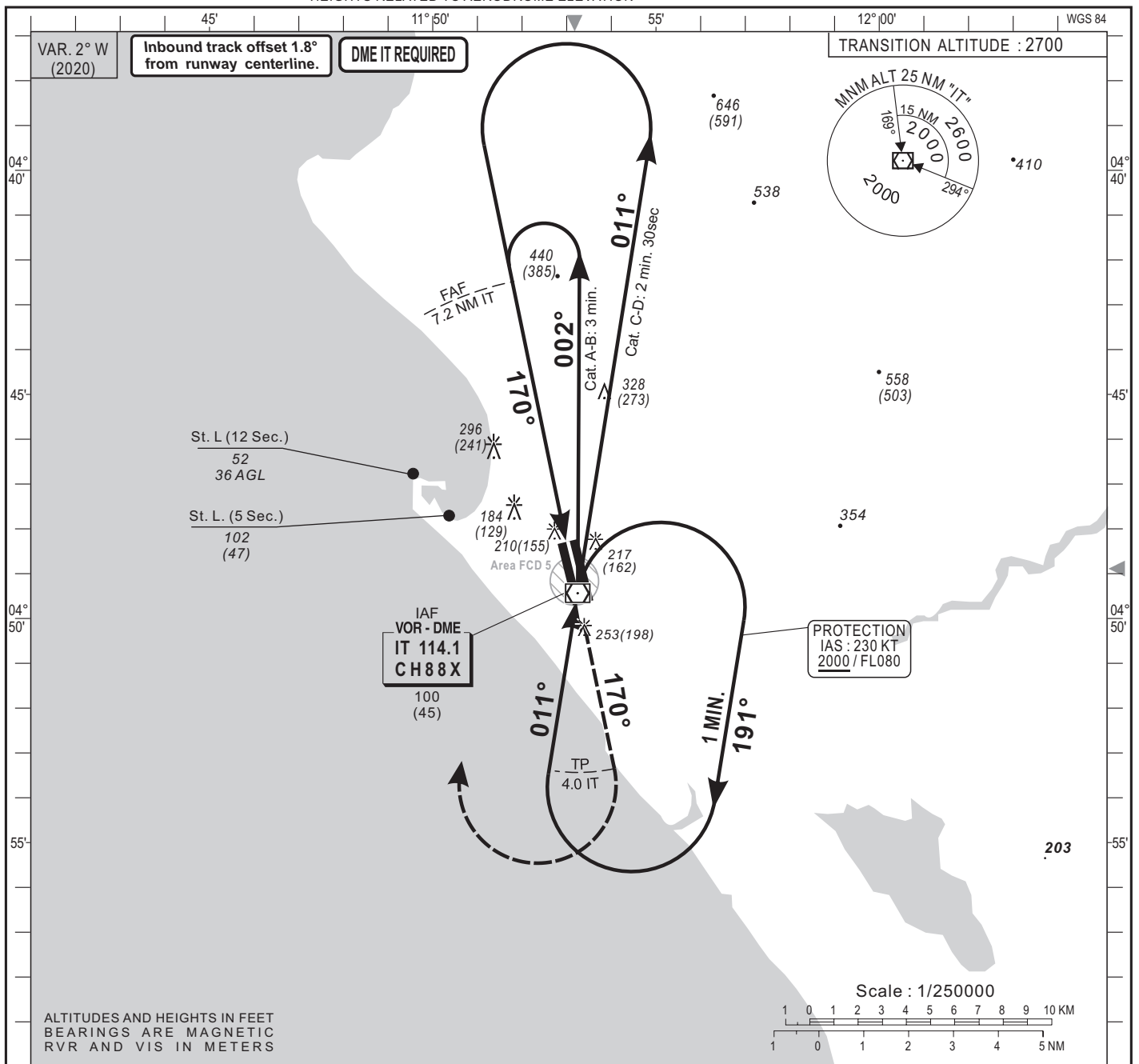
**INSTRUMENT APPROACH CHART**  
Categories A-B-C-D

ELEV.: 55  
THR : 55

APP : POINTE NOIRE Tower 124.3  
TWR : POINTE NOIRE Tower 124.3

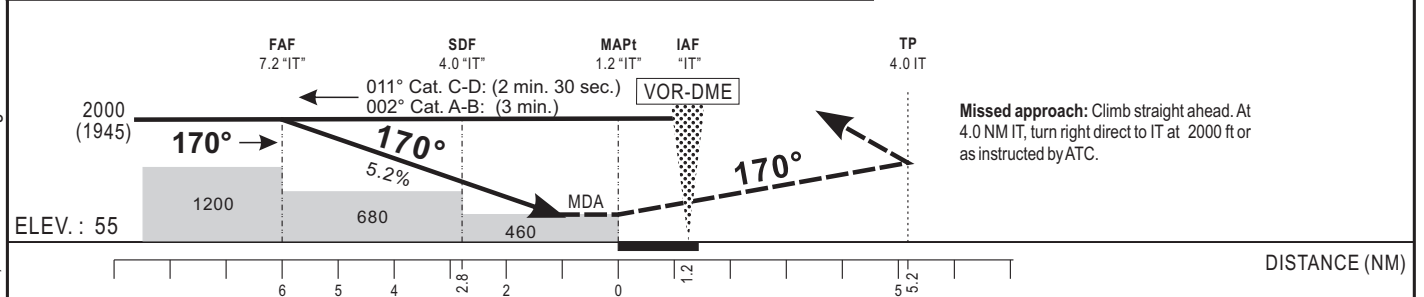
**POINTE NOIRE (FCPP)**  
VOR Y - RWY 17  
IDENT VOR IT" FREQ 114.1

HEIGHTS RELATED TO AERODROME ELEVATION



Distance to IT (NM)	FAF	8	7	6	5	4	3
Altitude (ft)	2000	1950	1640	1320	1000	680	

Notes : Inbound track offset 1.8° from runway centerline.



CAT	VOR-DME				CIRCLING (*)				RVR for take-off: CAT A - B-C : 400 Cat D : 400
	OCA (OCH)	MDA MDH	RVR(1)	RVR(2)	OCA (OCH)	MDA MDH	VIS		
A	456 (401)	460 (410)	900	1500	528 (473)	530 (480)	1500		
B	456 (401)	460 (410)	1000	1500	590 (535)	590 (540)	1600		
C	456 (401)	460 (410)	1000	1800	820 (765)	820 (770)	2400		
D	456 (401)	460 (410)	1400	2000	820 (765)	820 (770)	3600		

Timing FAF-MAPt 6.0 NM					
KT	MIN	SEC	KT	MIN	SEC
90	4	Min 00	140	2	Min 34
100	3	Min 36	150	2	Min 24
110	3	Min 16	160	2	Min 15
120	3	Min 00	170	2	Min 07
130	2	Min 46	180	2	Min 00

Notes : (1) With approach lights - (2) Without approach lights  
- (\*) OCH and MDH AAL - Daytime only

CORRECTIONS: Magnetic variation, VOR altitude/height.